



## 2.5' Membrane Model SSH R.O. Systems



Specifications	
Product Quality	<500 PPM
Product Press.	<25 psig
Feed Flow	4.2 GPM
Inlet Press. Required	60-80 psig
Inlet Connection	.75"
Outlet Connection	.75"
Product Connection	.75"
Power Requirements	480V @ 5A 240V @ 10A
Instrument Air	< 1 CFM @ < 125 PSI

### The three stage prefiltration system consist of the following:

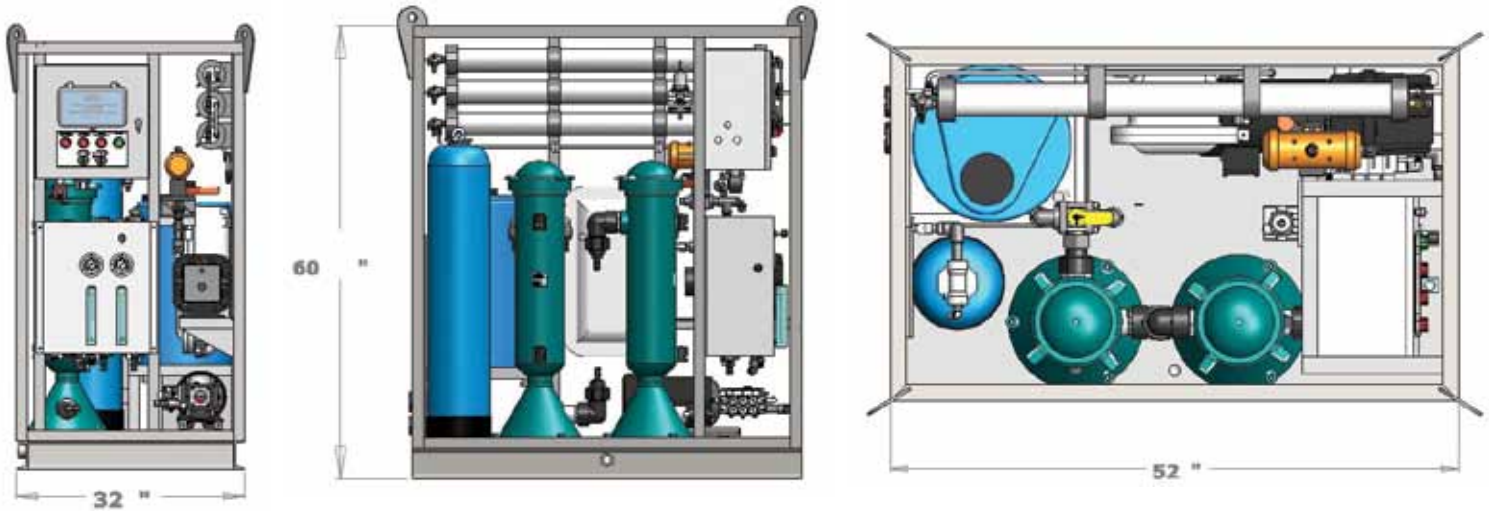
1. Media filter with automatic backwash (optional)
2. 25 Micron bag type filters with polypropylene filter housing.
3. 5 Micron cartridge filters with polypropylene filter housing.

### CUSTOMER INSTALLATION SUPPLY & REQUIREMENTS

1. All piping to R.O. systems nozzles. Feed inlet must be a regulated water supply of 5 gpm at 60-80 psi .
2. To bring 240 vac supply 10 amp circuit to the system.
3. Utility air supply line < 1 SCFM @ 120 psi.
4. Lifting, Loading, Installation and transportation of equipment and personnel as required.

## 4' Membrane Systems

Model	SF-500	SF-1000	SF-1400	SF-1800
Product Flow	.35 GPM	.69 GPM	.97 GPM	1.25 GPM
Gallons/Day	500 GPD	1,000 GPD	1,400 GPD	1,800 GPD
Barrels/Day	12.0 BPD	24.0 BPD	33.3 BPD	48.2 BPD
M <sup>3</sup> /Day	1.9 M <sup>3</sup> D	3.78 M <sup>3</sup> D	5.3 M <sup>3</sup> D	6.8 M <sup>3</sup> D



## Seawater Reverse Osmosis Watermaker, MODELS: 500 - 1,000 - 1,400 & 1,800 GPD

**The Reverse Osmosis System is skid mounted. Weight is 950 LB.**

1. Filmtec spiral wound membranes.
2. Fiberglass pressure vessels rated for 1,000 psi.
3. Direct Driven Triplex Pump with 316 stainless steel liquid end and SS-rupture disk assembly.
4. NEMA 4X Control box with the following controls and monitors (Class 1, div 2 Gr C & D available).
 

<ol style="list-style-type: none"> <li>A. Pump run light.</li> <li>B. Low suction pressure shut-down indicator light.</li> <li>C. High discharge pressure shut-down indicator light.</li> <li>D. Bad product water light.</li> <li>E. Digital conductivity meter.</li> </ol>	<ol style="list-style-type: none"> <li>F. Off/On-Start selector switch.</li> <li>G. Clean-normal mode selector switch.</li> <li>H. Allen/Bradley PLC.</li> </ol>
--	--
5. 3 horse power high efficiency, 3 PH, 50 or 60 HZ, 240/480 VAC, TEFC, Class F insulation with 1.15 S. F.
6. All high pressure piping and fittings are 316-SS and braided stainless hose with Teflon lining.
7. Product diverter valve
8. 316-SS High pressure safety shut down switch.
9. 316-SS Low pressure safety shut down switch.
10. System operating & membrane cleaning instruction plates are provided on units.
11. Pressure gauges with monel internals are panel mounted for feed, product and D.P. of membranes and filters.
12. Variable Orifice type feed & product water flow meter and are provided for monitoring system flow rates.
13. Chlorine injection system for post disinfection of produced water going to storage. (optional)
14. PH neutralization and re-hardening filter for product water. (optional)
15. Steel skid supplied with hot dipped galvanized finish.